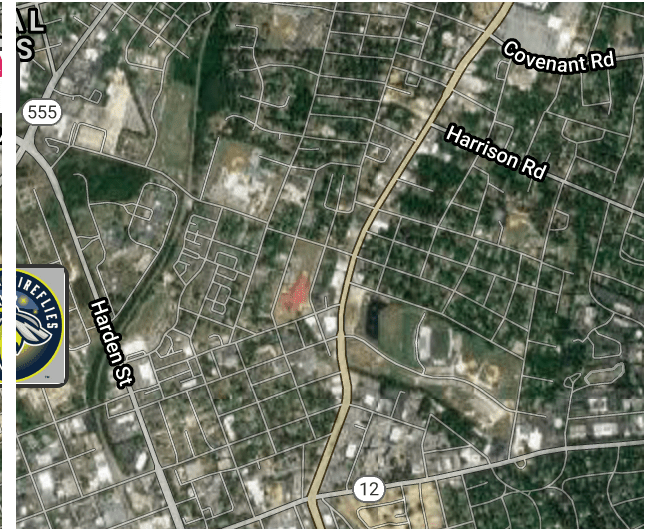
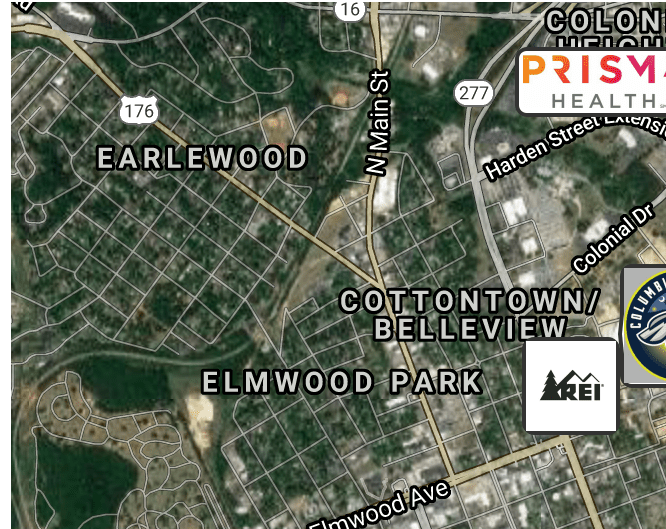
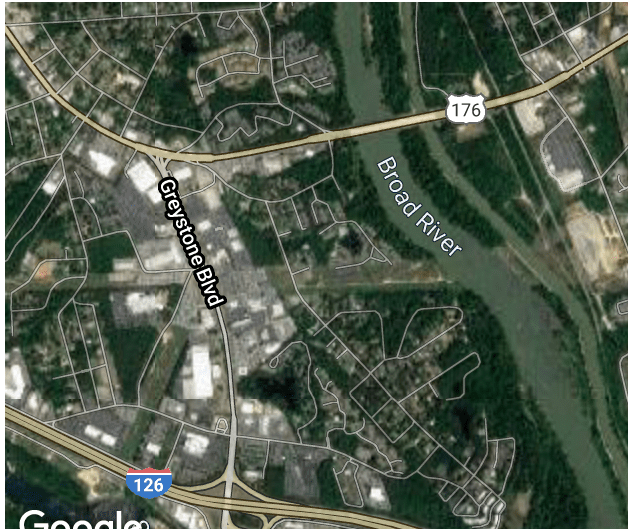
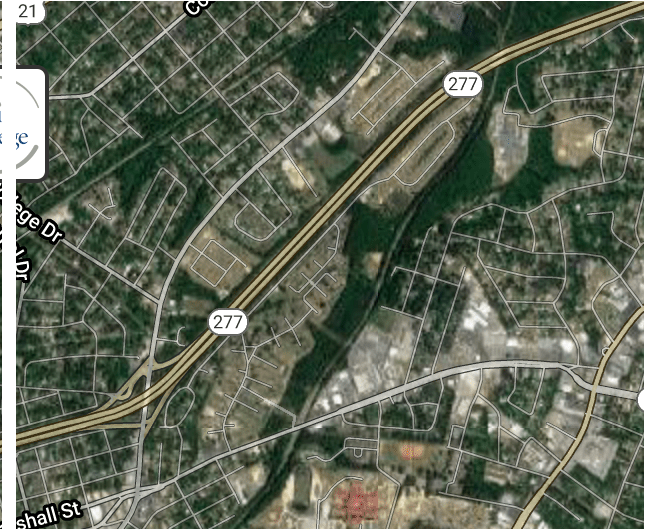
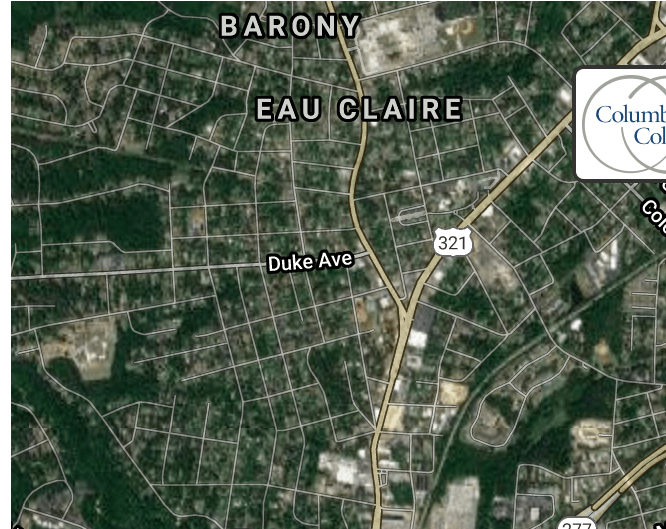


**160+ ACRES FRONTING BROAD RIVER DOWNTOWN**  
LAND FOR SALE | Riverfront Tract, Columbia, SC 29203



Exclusively Presented By

**SHERRI C. BURRISS**

803.900.8017

sburriss@roicommercialsc.com

**GEORGE S. MEETZE**

803.900.8016

gmeetze@roicommercialsc.com

**ROI COMMERCIAL, LLC**

1300 Sumter Street

Columbia, SC 29201

803.900.8020





## PROPERTY SUMMARY

<b>Sale Price:</b>	\$650,000
<b>Lot Size:</b>	160.56 Acres
<b>APN #:</b>	R07415-02-03, R09203-01-01, R27415-02-02, R09202-01-09
<b>Zoning:</b>	D-1, RS-HD & RU

## PROPERTY OVERVIEW

Excellent Residential Development Opportunity with over 160 acres overlooking the Broad River

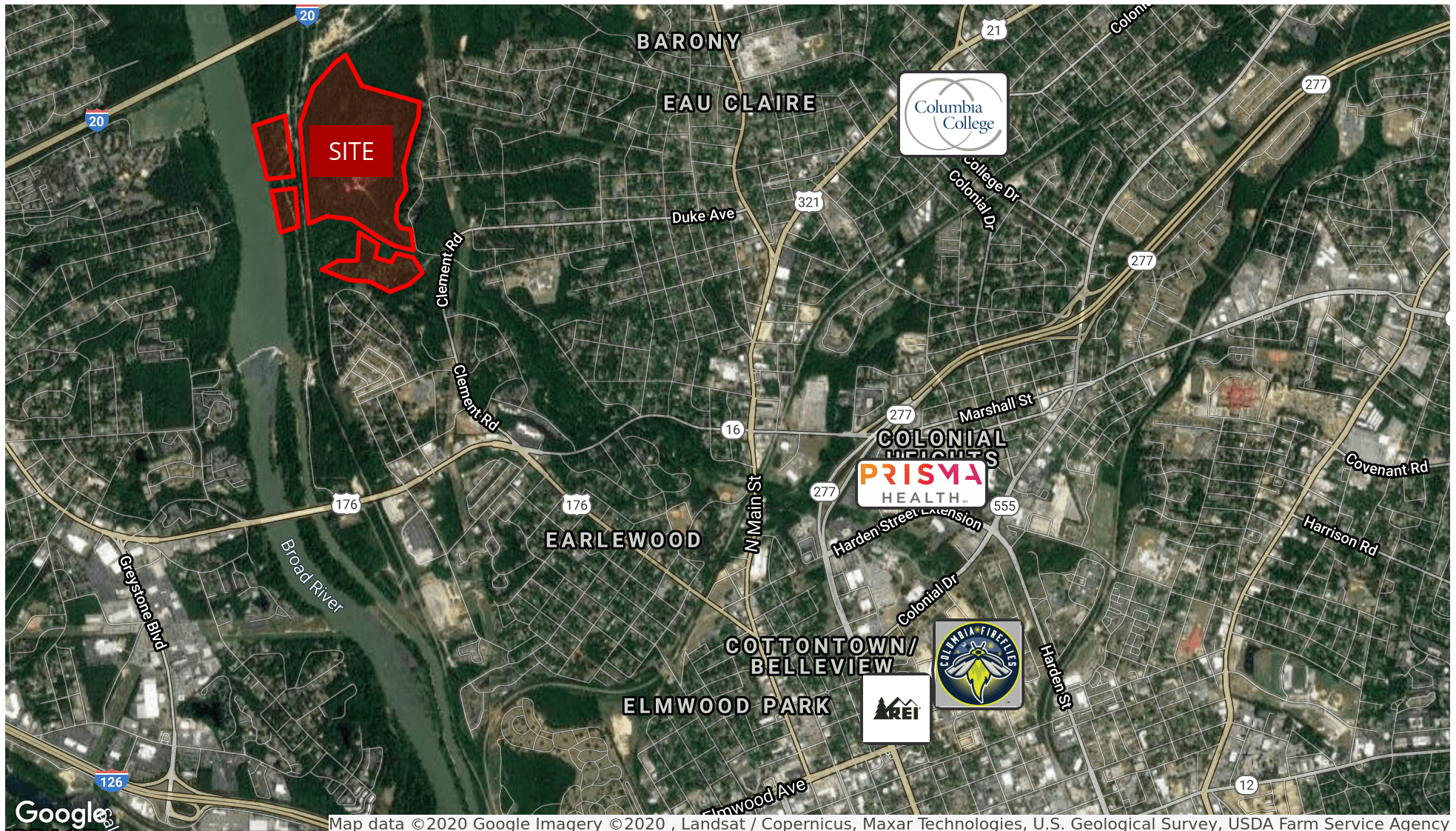
## LOCATION OVERVIEW

Adjacent to the Broad River and just minutes from Columbia's Business District

## PROPERTY HIGHLIGHTS

- +/- 160.56 acres, +/- 125 usable
- Located +/- 2.5 miles from Columbia's Business District
- Adjacent to the Broad River
- Excellent site for Residential Development
- City water & sewer





Map data ©2020 Google Imagery ©2020 , Landsat / Copernicus, Maxar Technologies, U.S. Geological Survey, USDA Farm Service Agency